

# Big Idea #3: Connect

Short term solutions for intersection safety improvements along the major arterial streets in downtown.



**Intersections create points of conflict for motorists, cyclists and pedestrians and represent 1/4 of all traffic fatalities and 1/2 of all traffic-related injuries nationwide.**

In Downtown Columbia, major arterials such as Huger, Elmwood, and Assembly serve as barriers to pedestrian movement. The perceived and real risks of crossing wide, multi-lane streets with high speed vehicles effectively compartmentalizes areas of Downtown, negating many of the agglomeration benefits that businesses and residents derive from their Downtown location.



To fix broken links in the network of Downtown streets and sidewalks, this initiative aligns the West Gervais District Plan, Walk Bike Columbia, and this ongoing Downtown Strategic Plan with City and State capital improvement plans to ensure that safety improvements at major arterial streets are prioritized for near-term implementation.

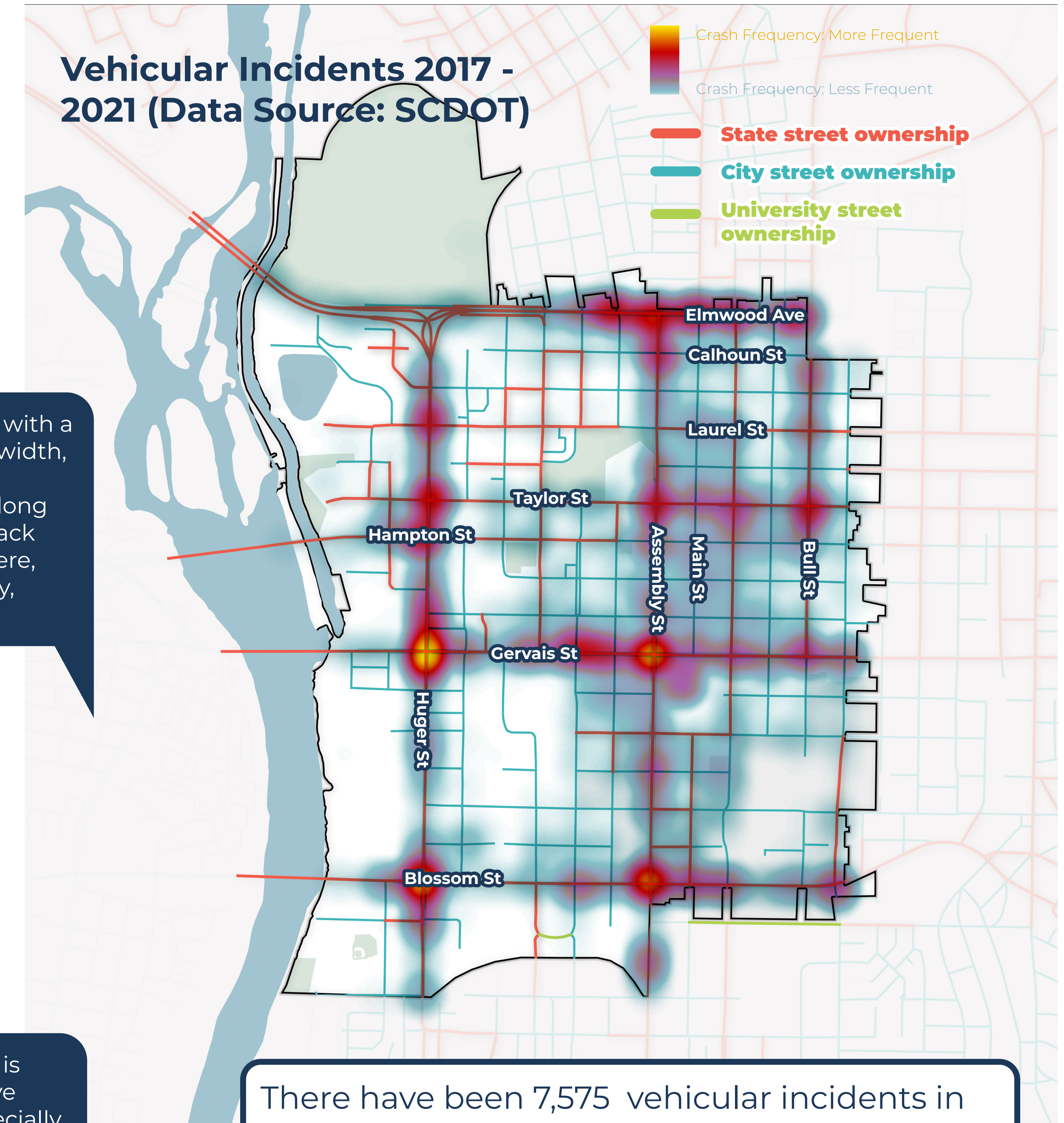


"Crossing Taylor Street, even with a HAWK, is difficult, given the width, speed of oncoming vehicles, and lack of wide sidewalks along both sides of Taylor. Also, a lack of shade that is consistent here, along Huger, along Assembly, along Sumter, etc."

"I work on main st and my wife works at the capitol so we take advantage of the capitol grounds to go on walks during our breaks. There is lots of green space and shade, very little car traffic, and it's safe clean and open."

"This is an area that is built for cars to move quickly. Huger especially is geared toward getting people up to 126"

"I walk there a lot & there's sidewalks on both sides and walk signs at all the intersections"



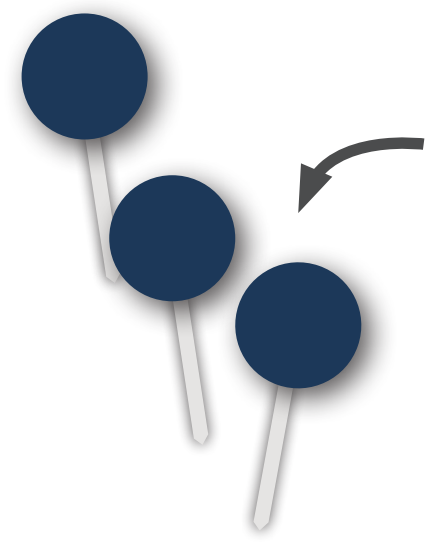
There have been 7,575 vehicular incidents in downtown in the 5-year period between 2017-2021. **Over half (51%) of all incidents have occurred on three state routes:**

- Huger Street
- Assembly Street
- Gervais Street

# Which Intersections Should we Prioritize?

## Should we Prioritize?

### If you were a Traffic Engineer...



Which 3 intersections should we prioritize when considering safety improvements for pedestrians and cyclists? Use the blue pins to show us on the map, and tell us why using a post-it!


Vehicular Incidents 2017 - 2021 (Data Source: SCDOT)

