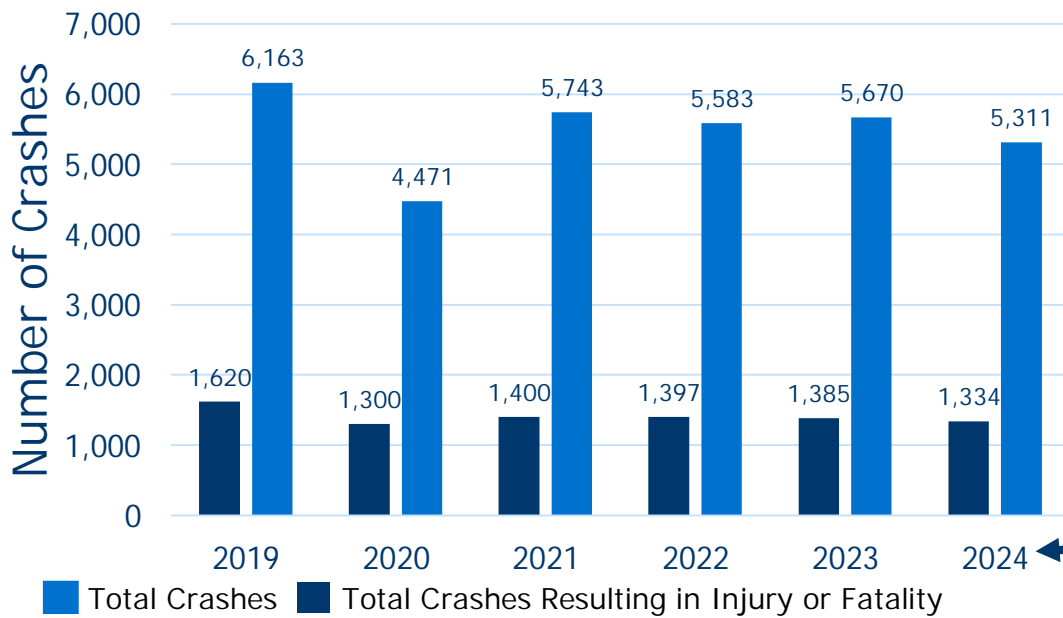


Sharing the Road

A COMPREHENSIVE SAFETY ACTION PLAN

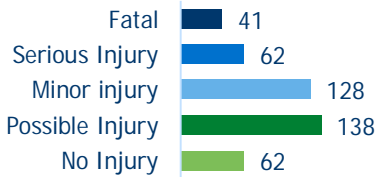


In the 5 years from 2019 – 2023 in the City of Columbia, there were:

- 34,732 crashes
- 7,003 crashes resulting in injury
- 99 crashes resulting in fatality



4 3 1 crashes that involved a pedestrian

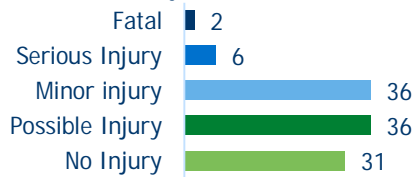


Top 3 Reported Crash Probable Cause

Probable Cause	# of Crashes	% of Crashes
Driving too Fast for Conditions	6,864	19.8%
Failure to Yield Right of Way	6,736	19.4%
Improper Lane use/change	5,397	15.5%



1 1 1 crashes that involved a bicyclist



Top 3 Reported Crash Manner of Collision

Probable Cause	# of Crashes	% of Crashes
Angle	11,809	34.0%
Rear End	11,506	33.1%
Sideswipe, Same Direction	5,295	15.2%

Crashes Involving Pedestrians and Bicyclists make up 1.5% of total crashes in the city, but account for 43% of fatal crashes, and 21% of serious injury crashes.

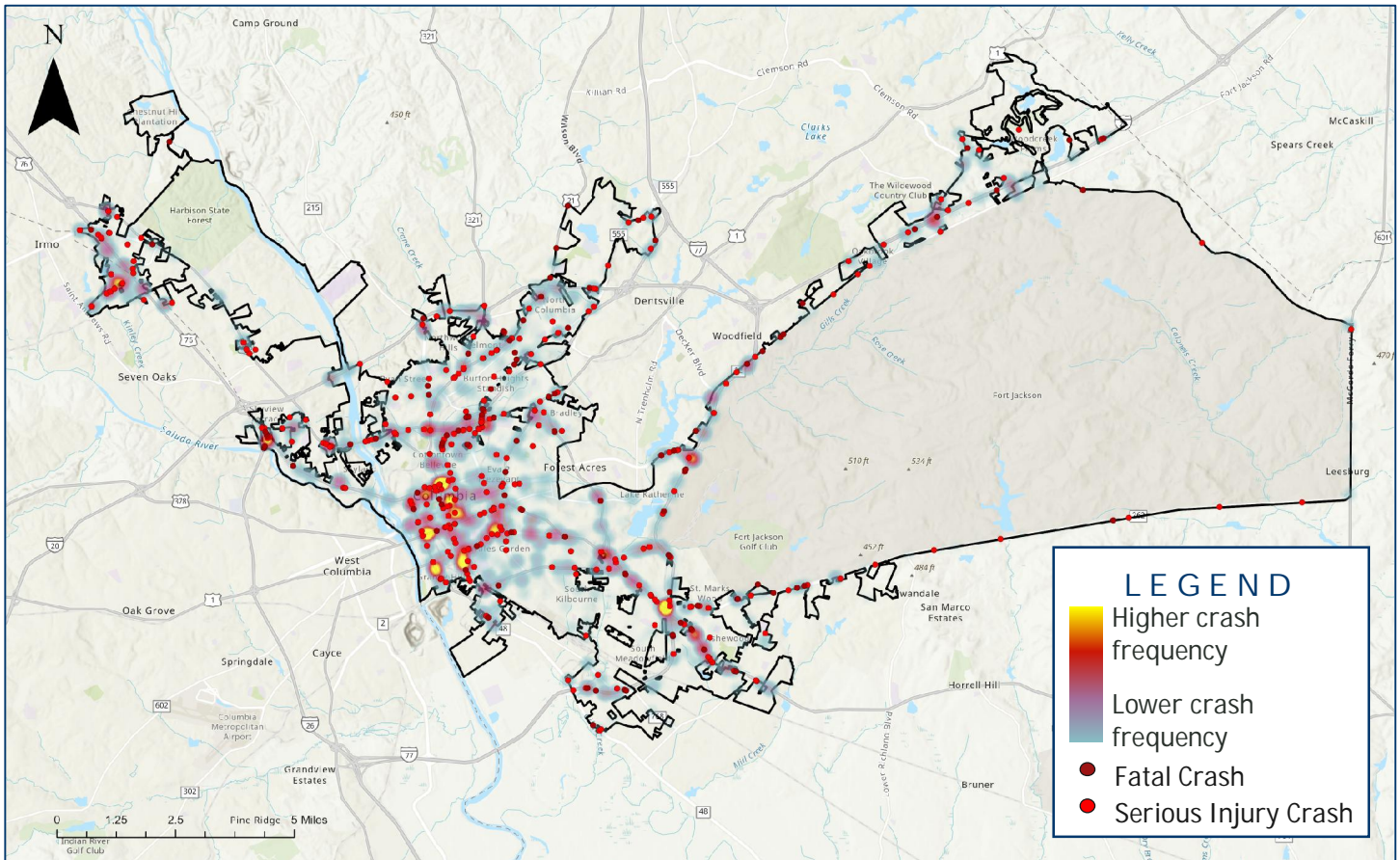
What we want to hear from you...

- What traffic safety concerns do you have within the City?
- Are there unreported crashes or locations that may be underrepresented in the crash data?
- Where do we have opportunities to implement low-cost and/or high-benefit improvements?



Scan the QR code or use the URL below to visit the online interactive map of crash locations and provide location specific comments:
<https://engage.publiccoordinate.com/project/city-of-columbia-sc-safety-action-plan>

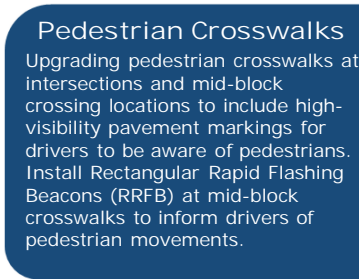
Crash Heat Map with Fatal and Serious Injury Crashes (2019-2023)



Examples of Action Plan recommendations could include:



Access Management
Adding medians at strategic locations will prevent left-turn angle crashes at driveways and improve the flow of traffic along corridors. Consolidating driveways where possible allows reduced conflict points between turning vehicles.



Pedestrian Crosswalks
Upgrading pedestrian crosswalks at intersections and mid-block crossing locations to include high-visibility pavement markings for drivers to be aware of pedestrians. Install Rectangular Rapid Flashing Beacons (RRFB) at mid-block crosswalks to inform drivers of pedestrian movements.



Lighting
Intersection and street lighting are countermeasures that improve nighttime visibility. Lighting provides visibility for motorists, pedestrians, and cyclists along the roadway.

Intersection Treatments
Intersection improvements could include installing turn lanes where necessary, installing signals at unsignalized intersections where appropriate, and improving existing signal phasing/timings.



Roundabouts
Roundabouts are circular intersections designed to eliminate left turns by requiring traffic to exit to the right of the circle. Roundabouts are installed to reduce vehicular speeds, improve safety at intersections through eliminating angle collisions, and help traffic flow more efficiently.



Sidewalks and Shared-Use Paths
Adding sidewalks and shared-use paths create a dedicated space for people to travel within the public right-of-way that is separated from roadway vehicles. These facilities improve safety and mobility and provide access to all types of pedestrian travel.