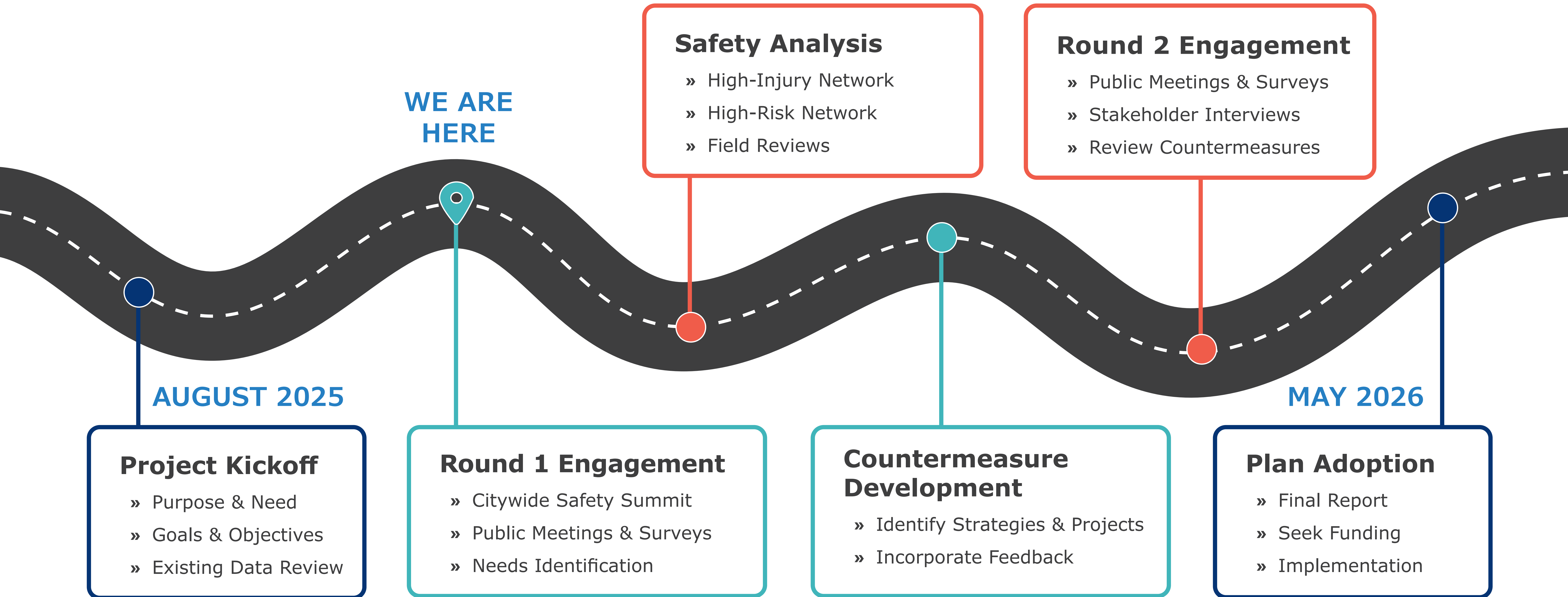
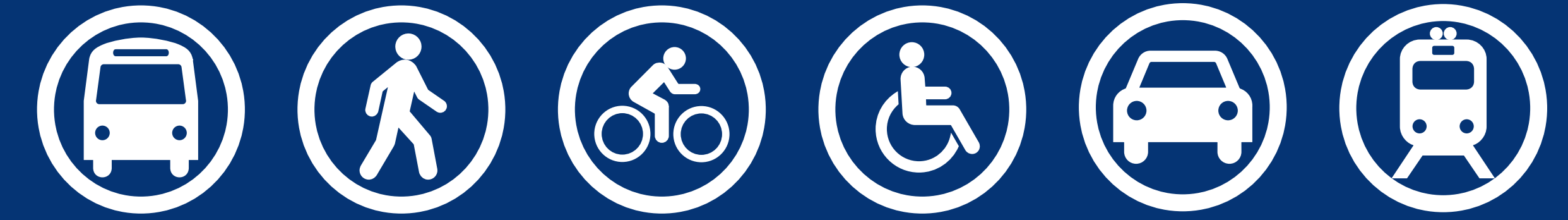


# Sharing the Road

A COMPREHENSIVE SAFETY ACTION PLAN

## THE SAFETY ACTION PLAN PROCESS



Please take our survey and visit our project website!



**SURVEY**



**WEBSITE**

[planninganddevelopment.columbiasc.gov/safe-streets](https://planninganddevelopment.columbiasc.gov/safe-streets)

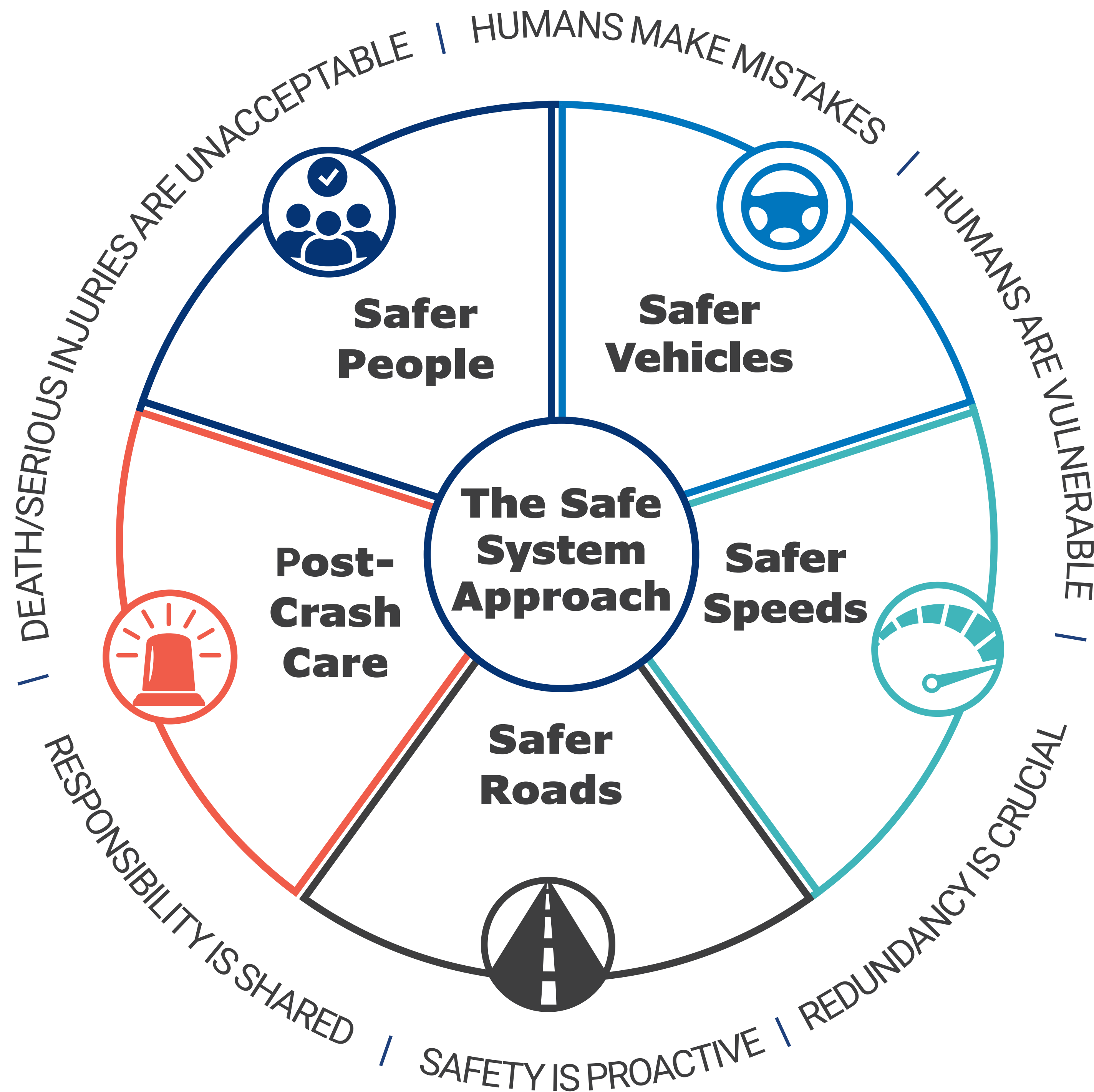
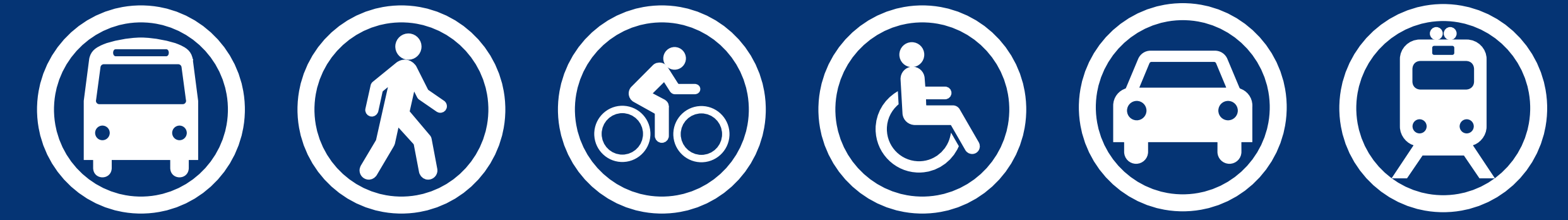
**Kimley»Horn**  
Expect More. Experience Better.



# Sharing the Road

A COMPREHENSIVE SAFETY ACTION PLAN

## VISION ZERO AND THE SAFE SYSTEM APPROACH



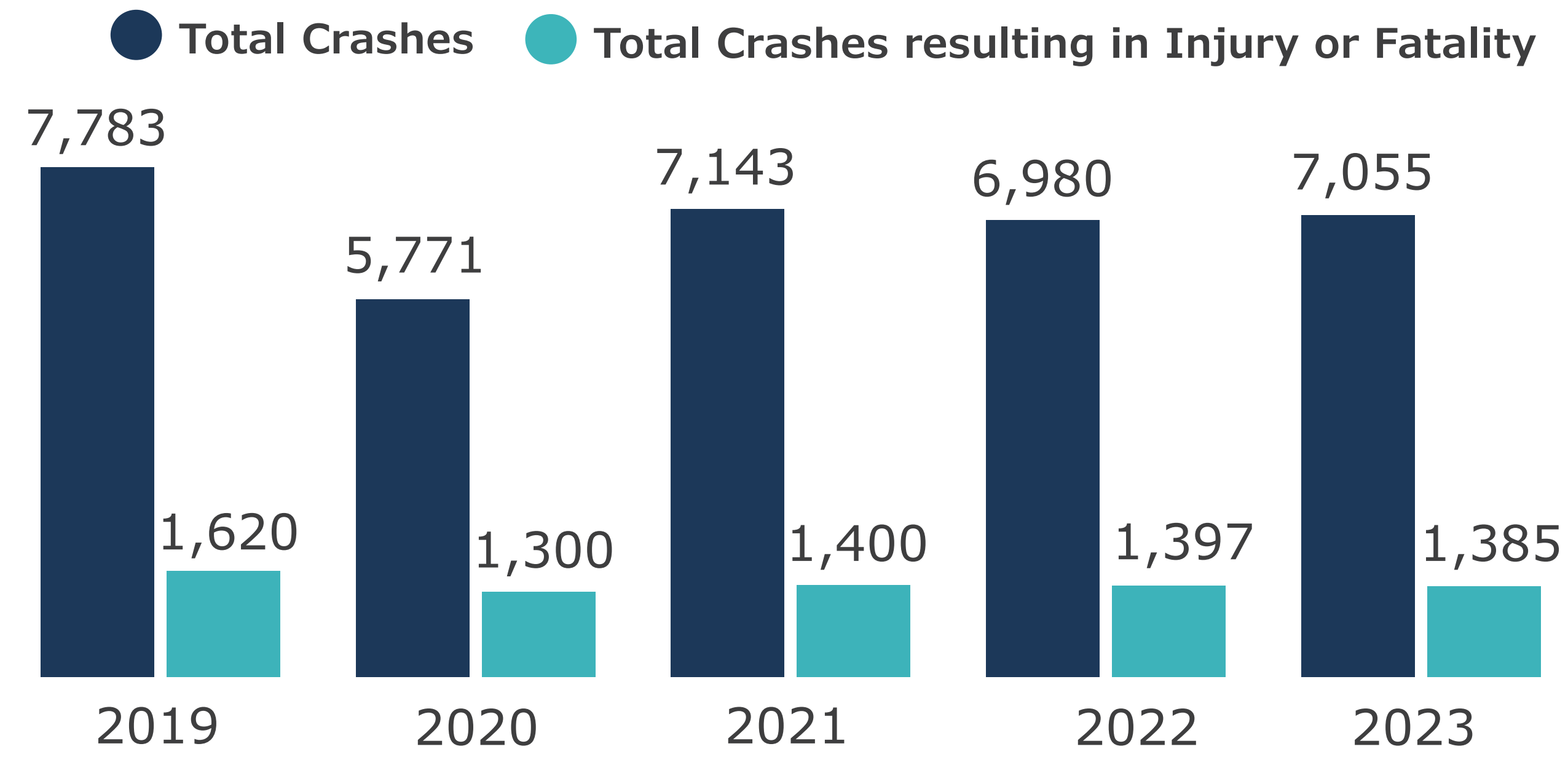
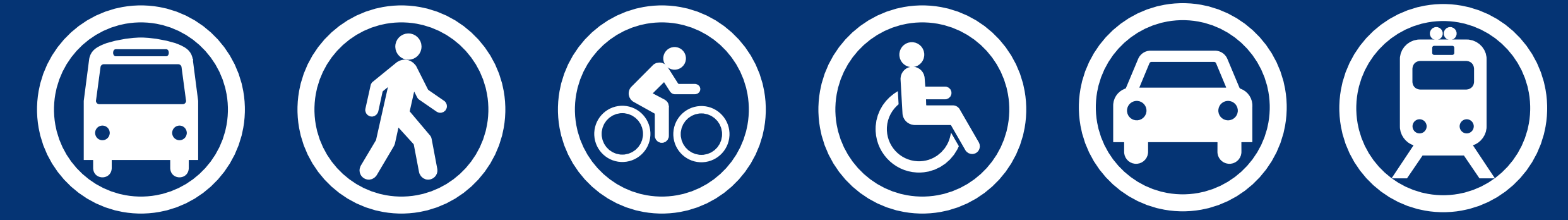
Graphic Source: United States Department of Transportation,  
*What is a Safe System Approach?*

- » As part of the Safety Action Plan, an official public commitment (resolution, policy, ordinance, etc.) to an eventual **goal of zero roadway fatalities and serious injuries** is required.
- » The safety action plan process and Vision Zero commitment are both based on the elements of the **Safe Systems Approach** from the US Department of Transportation Federal Highway Administration (FHWA).
- » The Safe Systems Approach focuses on designing infrastructure with the knowledge that **humans will make mistakes**, and addresses risks.
- » A commitment to zero traffic deaths means addressing safety for all roadway users, including pedestrians and bicyclists.

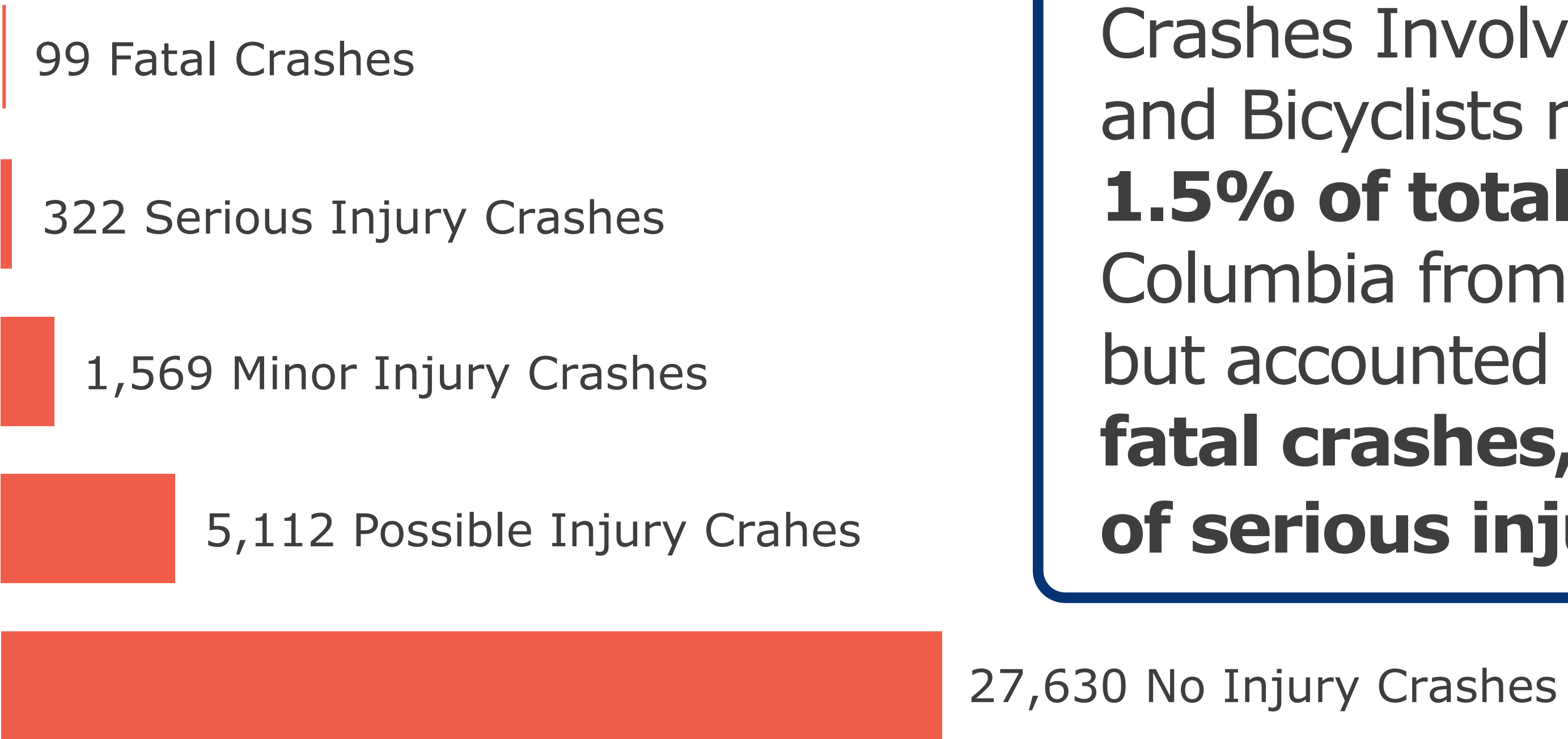
# Sharing the Road

A COMPREHENSIVE SAFETY ACTION PLAN

## 2019-2023 CRASH DATA SUMMARY



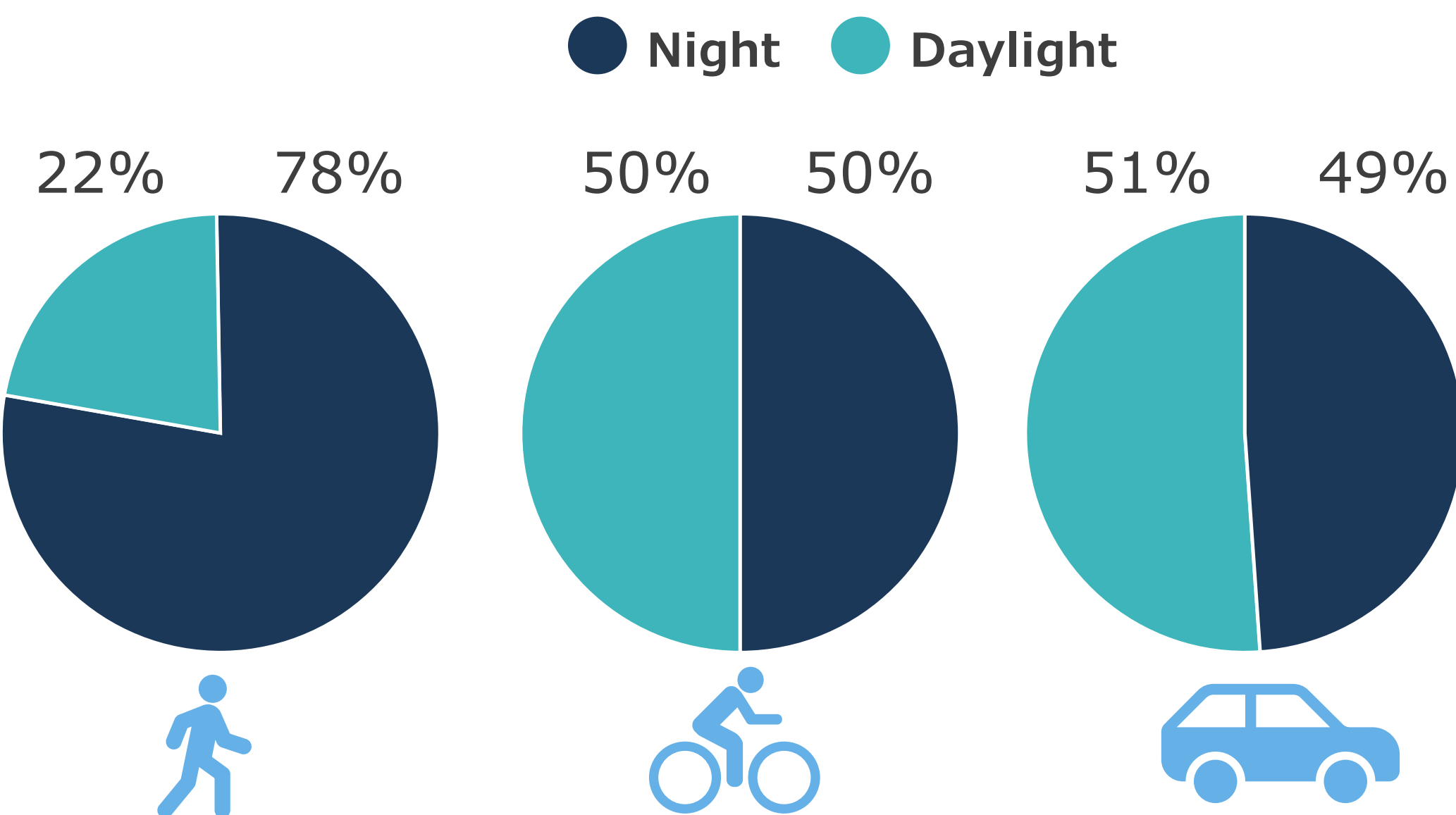
Although total crashes have decreased in the last 5 years, crashes resulting in injury or fatality have stayed consistent since 2021



Crashes Involving Pedestrians and Bicyclists made up **1.5% of total crashes** in Columbia from 2019-2023, but accounted for **43% of fatal crashes**, and **21% of serious injury crashes**.

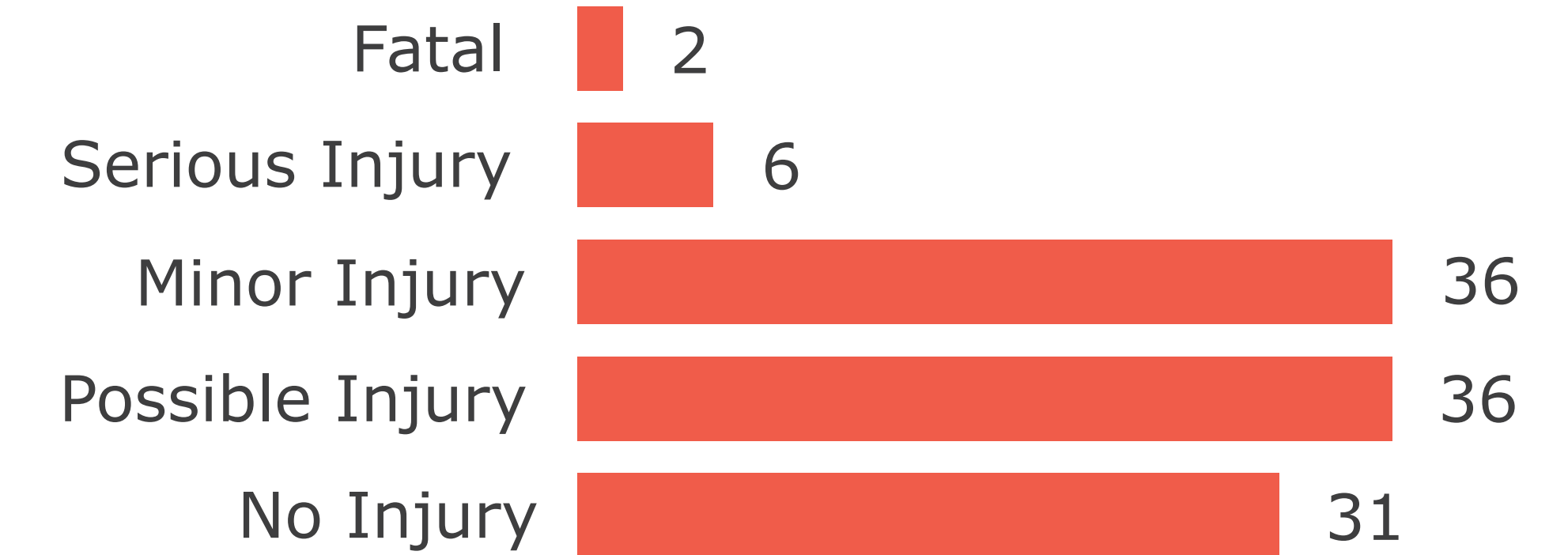
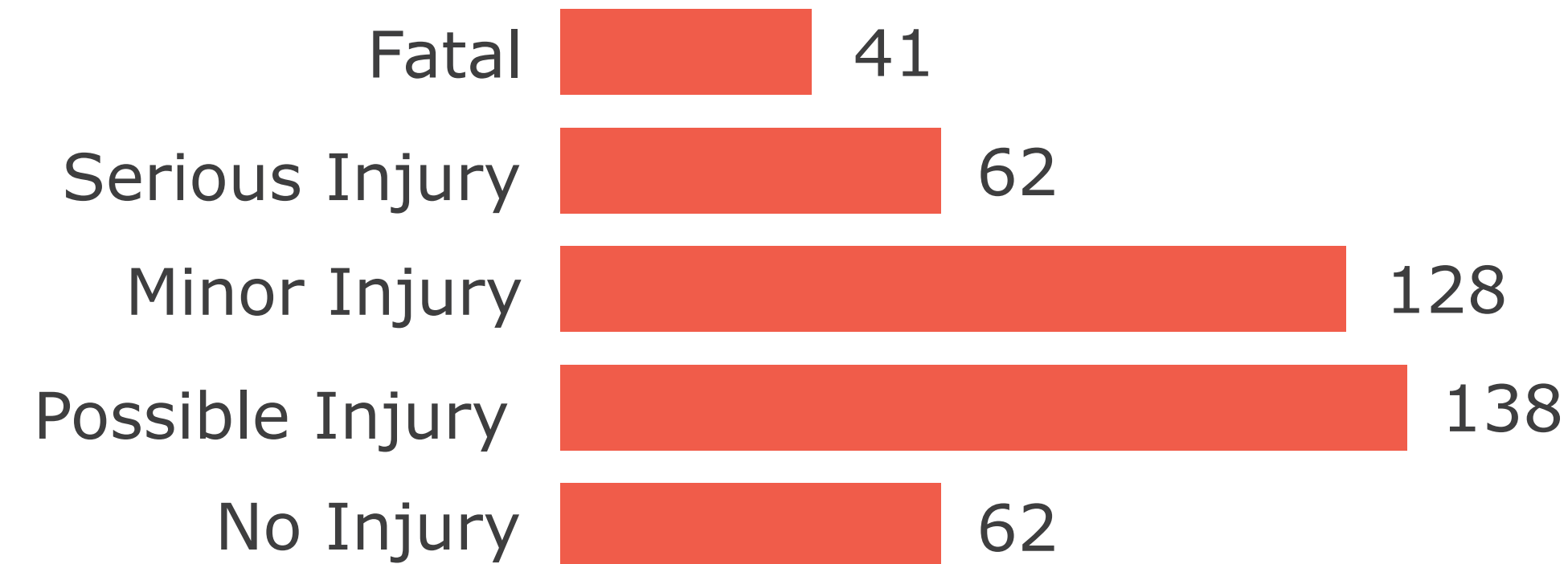
### FATAL & SERIOUS INJURY CRASHES BY LIGHT CONDITION

### PEDESTRIAN AND BICYCLIST CRASH DATA



**431** crashes that involved a pedestrian

**111** crashes that involved a bicyclist



# Sharing the Road

A COMPREHENSIVE SAFETY ACTION PLAN

## EXAMPLES OF INFRASTRUCTURE RECOMMENDATIONS



### Access Management

Adding medians at strategic locations will prevent left-turn angle crashes at driveways and improve the flow of traffic along corridors. Consolidating driveways where possible allows reduced conflict points between turning vehicles.



### Pedestrian Crosswalks

Upgrading pedestrian crosswalks at intersections and mid-block crossing locations to include high-visibility pavement markings for drivers to be aware of pedestrians. Install Rectangular Rapid Flashing Beacons (RRFB) at mid-block crosswalks to inform drivers of pedestrian movements.



### Intersection Treatments

Intersection improvements could include installing turn lanes where necessary, installing signals at unsignalized intersections where appropriate, and improving existing signal phasing/timings.



### Lighting

Intersection and street lighting are countermeasures that improve nighttime visibility. Lighting provides visibility for motorists, pedestrians, and cyclists along the roadway.



### Sidewalks and Shared-Use Paths

Adding sidewalks and shared-use paths create a dedicated space for people to travel within the public right-of-way that is separated from roadway vehicles. These facilities improve safety and mobility and provide access to all types of pedestrian travel.



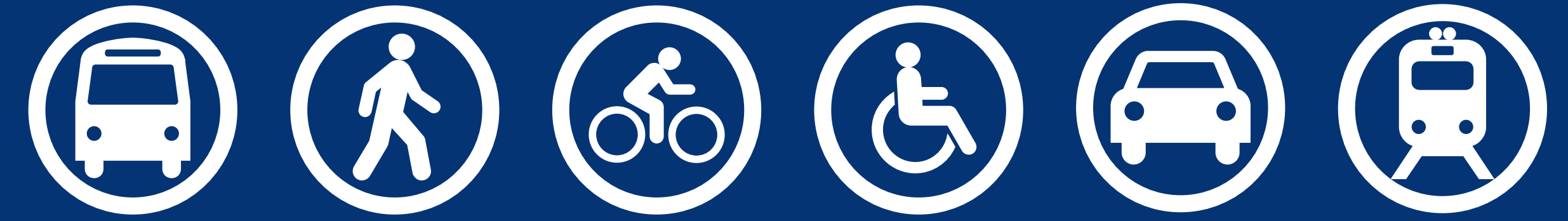
### Roundabouts

Roundabouts are circular intersections designed to eliminate left turns by requiring traffic to exit to the right of the circle. Roundabouts are installed to reduce vehicular speeds, improve safety at intersections through eliminating angle collisions, and help traffic flow more efficiently.

# Sharing the Road

A COMPREHENSIVE SAFETY ACTION PLAN

## HOW TO STAY ENGAGED



The online survey includes questions about yourself, your top safety concerns, and your preferred transportation safety initiatives. Additionally, an interactive map is provided where you can comment on safety issues you notice in specific locations around Columbia and read comments left by others in the community.

### ONLINE SURVEY



<https://engage.publiccoordinate.com/en/project/city-of-columbia-sc-safety-action-plan>

The project website includes information about the Safe Street for All (SS4A) Grant program, transportation safety trends in Columbia, future engagement opportunities, and other ongoing planning efforts relevant to the Safety Action Plan. The website will be updated as future engagement opportunities are scheduled, so make sure to check back or sign up for email updates.

### PROJECT WEBSITE



<https://planninganddevelopment.columbiasc.gov/safe-streets/>

If you have additional questions or would like to sign up for emailed project updates, please reach out to **Leigh Deforth** at **[Leigh.Deforth@columbiasc.gov](mailto:Leigh.Deforth@columbiasc.gov)**

[planninganddevelopment.columbiasc.gov/safe-streets](https://planninganddevelopment.columbiasc.gov/safe-streets)

**Kimley»Horn**  
Expect More. Experience Better.

**CITY OF Columbia**